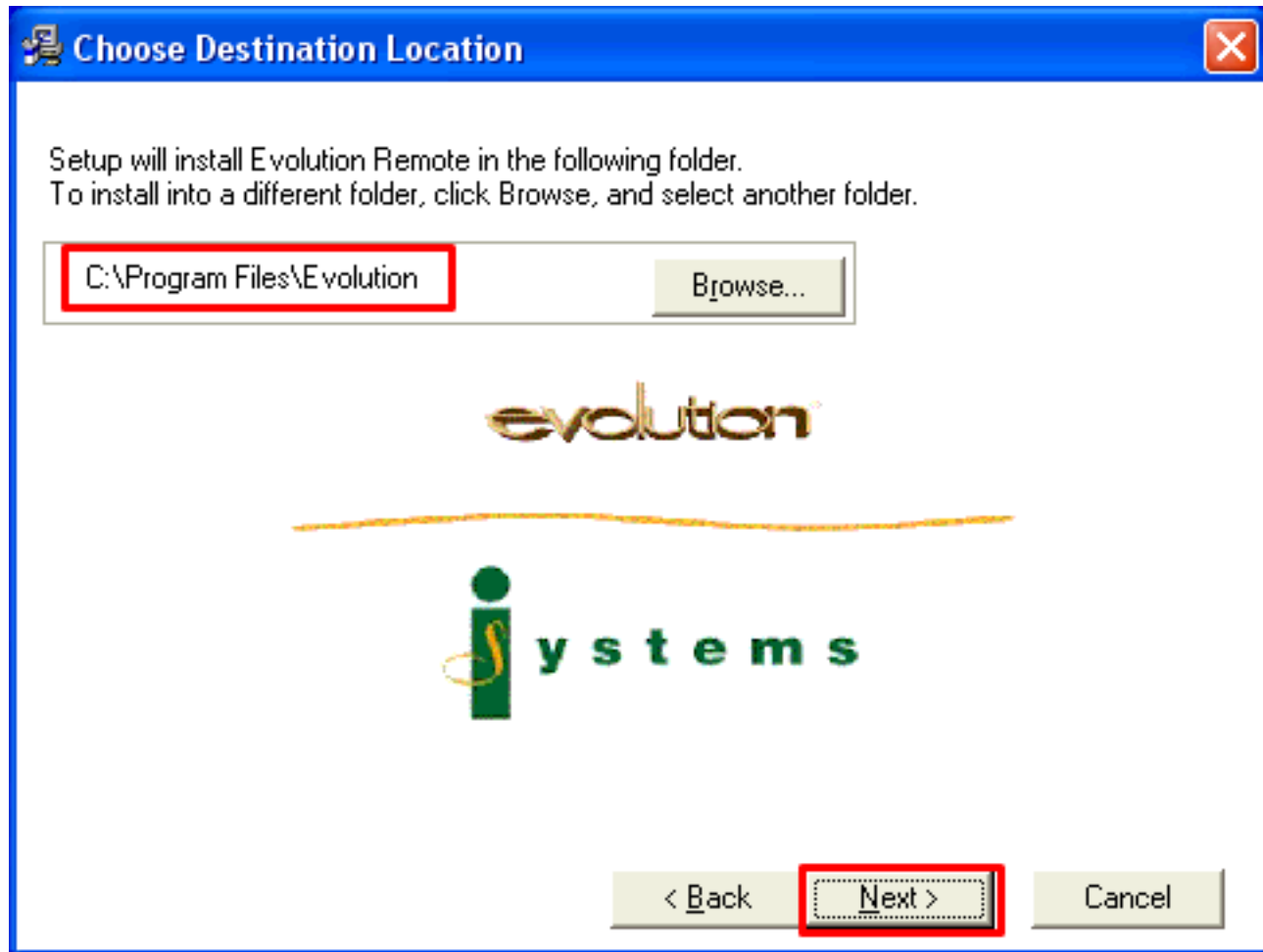


# Install Evolution as the Administrator

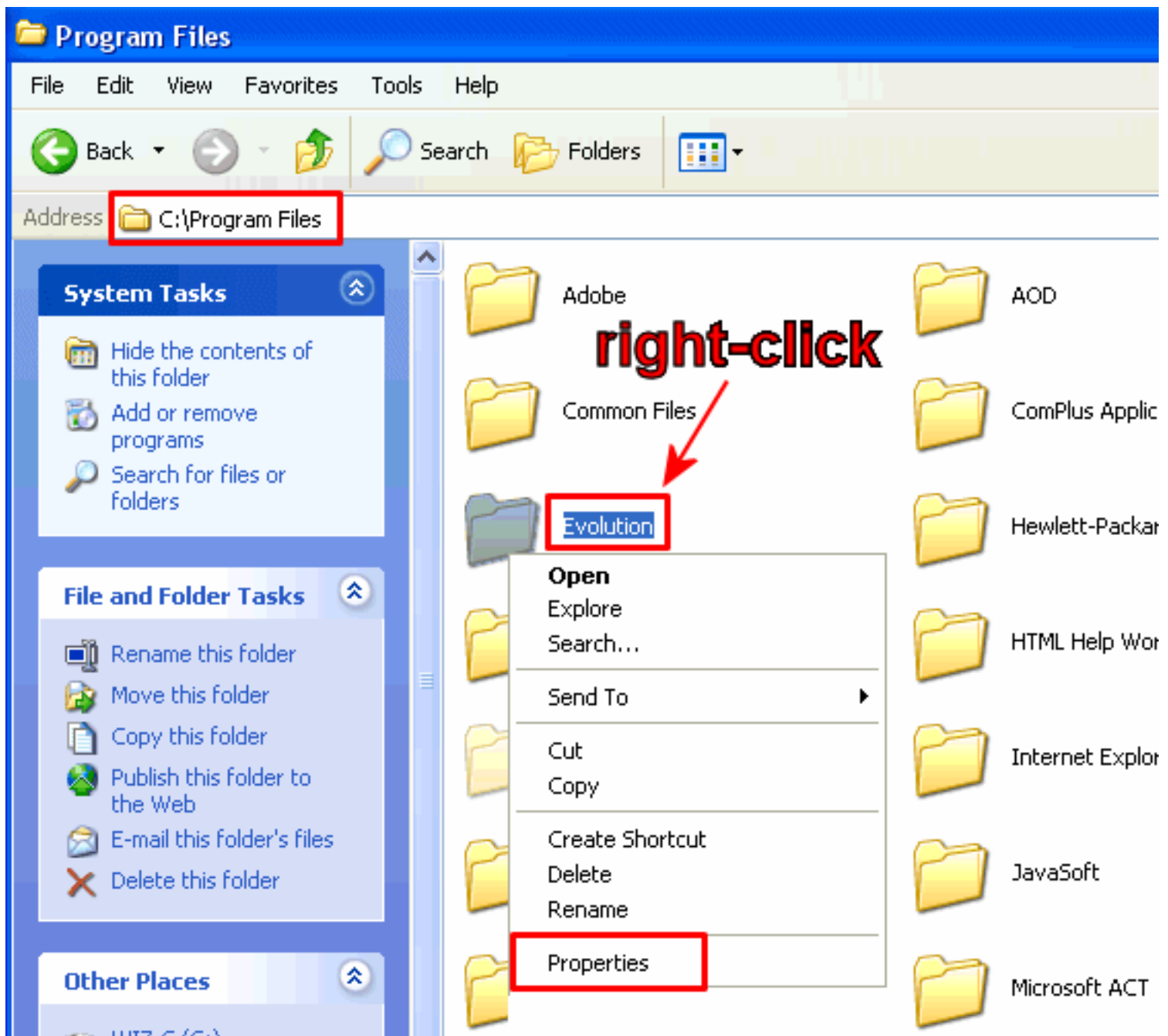
The first step must be performed by an Administrator running the appropriate Evolution installer: **EvoLocal.exe**, **EvoRMT.exe** or **EvoOLR.exe**. Download the file to a suitable place, and launch it with a double-click. The installer prompts for a target location, and it's easiest to just accept the default:



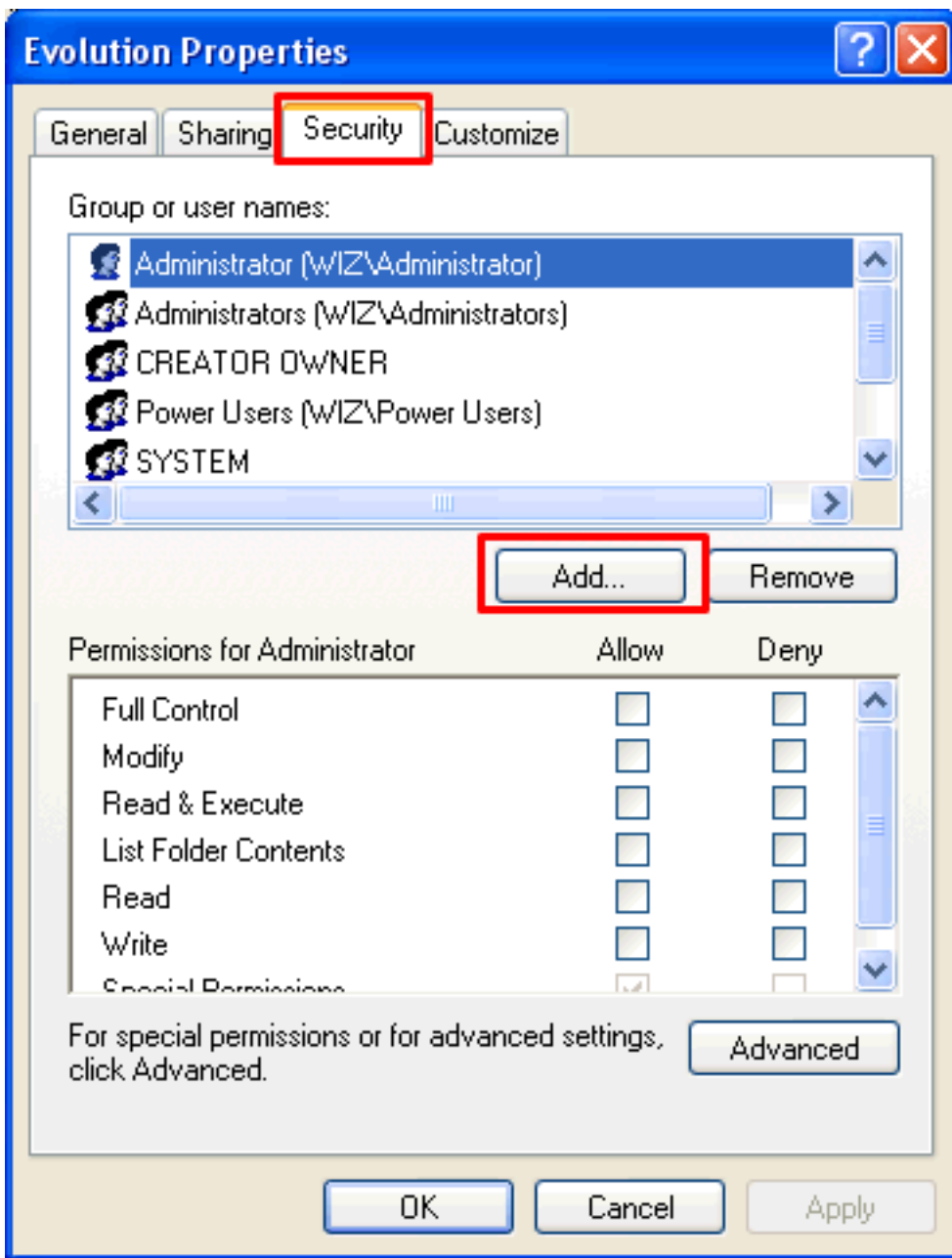
If a different install location is desired, it can be used as long as it's noted for the later step.

## Open Up The Permissions

Once Evolution has been installed, it's ready to run for the Administrator user, but not as a "regular" user. To fix this, use Windows Explorer and navigate to the **C:\Program Files** folder, clicking past the warning pages that suggest you probably don't want to be in these system areas - you really do.



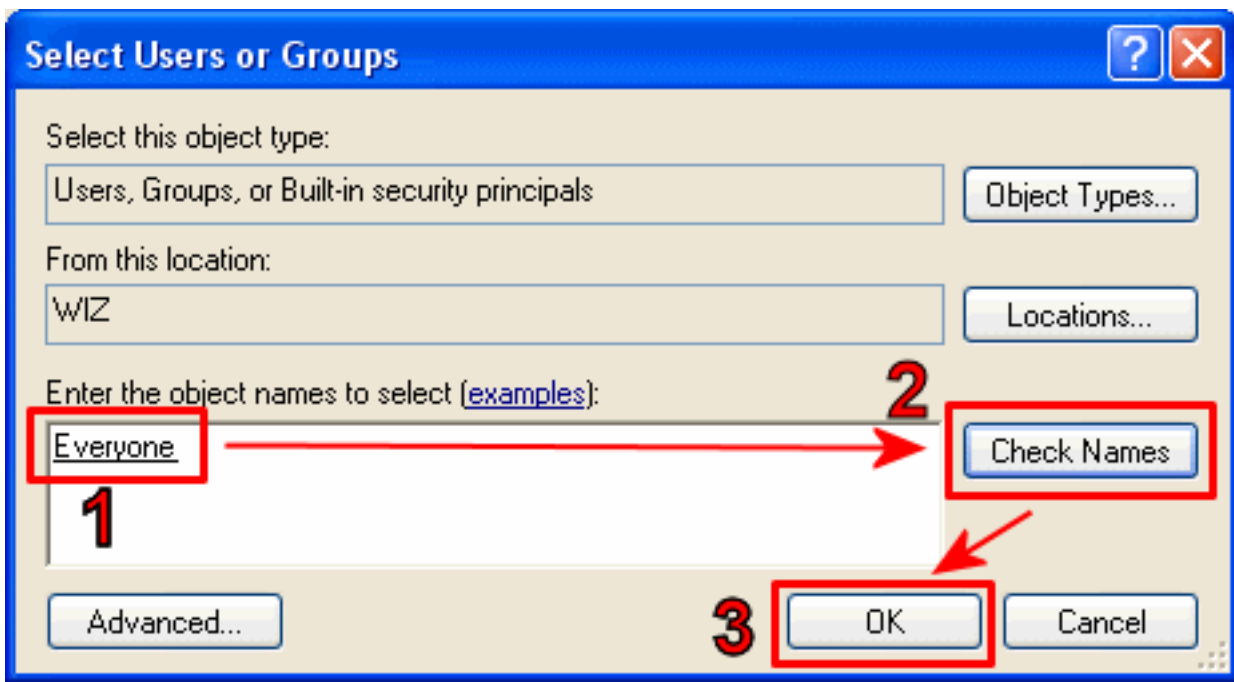
On the **Evolution** folder, right-click and select **Properties**, then click on the **Security** tab at the top. This should bring up a dialog box similar to this:



**Note** - if there is no **Security** option on the context menu, see the **Caveats** below.

This shows the restrictions on the **Evolution** folder, listing who can do what, and the default permissions grant ordinary users **read**, but not **write** ability. The inability to update the software components stored here is why Evolution fails when a new version is available. We wish to open the directory to allow *anybody* to update it: when the server presents updates, they'll be accepted.

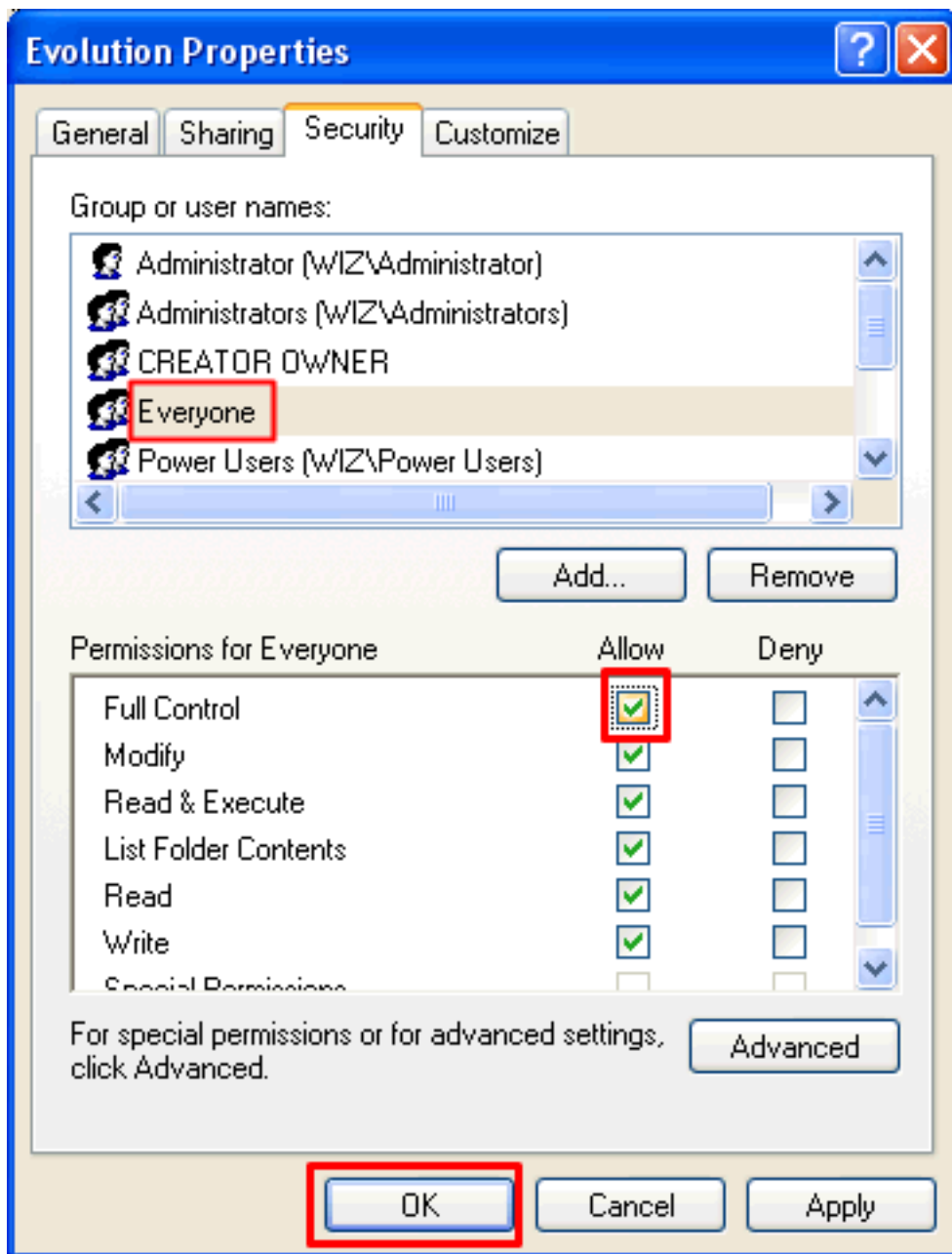
To do this, click the **Add...** button and it will prompt for the name of a user or group:



**Note** if the **Add** button is greyed out, you're not an administrator on the system and do not have permissions to do this.

We normally prefer **Everyone** because it depends the least on the specifics of the local network and should work properly for all users. Enter this, then click **Check Names** to verify that it's been entered properly, then click **OK** to make it so:

This adds the entry to the list of users and groups, but we must next grant it those extra rights required. Insure that the name **Everyone** is hilghted, then click the **Full Control** checkbox in the **Allow** column - this makes green checkboxes appear in the rest of the column.



Click **OK** to close this dialog box.

Log out of this administrative account and back in as the regular user: Evolution is now ready for use by anyone.